

Aqua-Vu®

THE ORIGINAL UNDERWATER VIEWING SYSTEM

QUAD-HD USER GUIDE



WWW.AQUAVU.COM

Aqua-Vu

THE ORIGINAL UNDERWATER VIEWING SYSTEM

THANK YOU FOR YOUR RECENT PURCHASE OF THE AQUA-VU QUAD HD UNDERWATER VIEWING SYSTEM. WE WANT OUR PRODUCTS TO PROVIDE YOU WITH THE BEST UNDERWATER VIEWING EXPERIENCE AS POSSIBLE. THAT MEANS MAXIMUM CUSTOMER SATISFACTION. IF YOU HAVE A PROBLEM WITH YOUR AQUA-VU UNIT PLEASE CONTACT OUTDOORS INSIGHT, INC. CUSTOMER SERVICE AT ONE OF THE FOLLOWING METHODS:

OUR WEBSITE: WWW.AQUAVU.COM

SUPPORT: CLICK ON SUPPORT—CONTACT US. ENTER YOUR NAME AND INFORMATION AND WE WILL GET BACK TO YOU WITHIN 2 BUSINESS DAYS.

PHONE: GIVE US A CALL AT 866-755-6303. NORMAL BUSINESS HOURS ARE 8AM TO 4PM M-F CENTRAL

PHYSICAL ADDRESS:

- STOP BY DURING NORMAL BUSINESS HOURS 8AM TO 4PM M-F CENTRAL
- OUR ADDRESS IS: 34076 COUNTY RD 3 CROSSLAKE, MN 56442

THANK YOU FOR YOUR PURCHASE!

SINCERELY,

TEAM AQUA-VU



QUAD HD USER GUIDE START HERE

FOR HELPFUL TIPS AND FAQ'S, VISIT OUR ONLINE HELP CENTER

WWW.HELP.AQUAVU.COM

ENTER YOUR MODEL NUMBER (E.G., QUAD-HD) FOR HELPFUL TIPS AND FAQ'S ON SETTING UP AND USING YOUR NEW AQUA-VU UNDERWATER CAMERA VIEWING SYSTEM

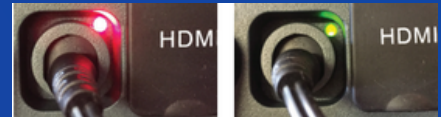
AQUA-VU HD UNDERWATER VIEWING SYSTEM

INCLUDED PARTS: SLA 12V BATTERY, 12V AUXILIARY CHARGER, 110V POWER SUPPLY, CARRYING CASE, METAL ROD -4 SCREWS TO BE USED WITH THE XD TROLLING FIN ACCESSORY (SOLD SEPARATELY).

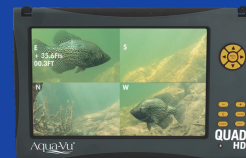
SCAN THE QR CODE BELOW FOR AN INSTRUCTIONAL VIDEO



STEP 1: FOR OPTIMAL PERFORMANCE CHARGE THE BATTERY OVERNIGHT PRIOR TO FIRST USE. THE PLUG IN PORTION TO THE OUTLET IS CALLED THE POWER SUPPLY. WHEN FULLY CHARGED, THE LIGHT WILL BE GREEN. FOR EXTENDED BATTERY LIFE, STORE SYSTEM IN A DRY PLACE AT ROOM TEMPERATURE AND PERIODICALLY CHARGE EVERY 2-3 MONTHS WHEN NOT IN USE.



STEP 2: PRESS AND HOLD THE POWER BUTTON TO TURN THE UNIT ON. PRESS THE MENU BUTTON TO CUSTOMIZE THE DISPLAY SETTINGS AS WELL AS TOGGLE ON/OFF TEMP/DEPTH. PRESSING THE EXIT BUTTON WILL GO BACK TO THE PREVIOUS SCREEN. PRESSING THE LIGHT BULB TURNS THE LIGHTS ON, WHILE PRESSING AGAIN TURNS THE LIGHTS OFF.



STEP 3: TO DEPLOY THE CAMERA, SIMPLY UNZIP CAMERA PROTECTIVE CASE. REMOVE PLASTIC COVERINGS ON ALL FOUR OF THE CAMERAS.



ONE YEAR LIMITED WARRANTY

OUTDOORS INSIGHT, INC. WARRANTS ITS PRODUCTS TO BE FREE FROM DEFECTS IN MATERIALS AND WORKMANSHIP FOR A PERIOD ONE-YEAR FROM THE ORIGINAL DATE OF PURCHASE. AQUA-VU WILL AT ITS SOLE DISCRETION REPAIR OR REPLACE ANY COMPONENTS THAT FAIL IN NORMAL USE. FAILURES CAUSED BY ABUSE, MISUSE, ALTERATION, OR SELF-REPAIR ARE NOT COVERED UNDER WARRANTY. THE WARRANTY IS VALID FOR THE ORIGINAL OWNER AND IS NON-TRANSFERABLE.

WARNINGS: ALWAYS KEEP CAMERA CABLE AWAY FROM CHILDREN AS WELL AS ICE AUGERS, PROPELLERS, ETC. KEEP THE MONITOR AND CAMERA AWAY FROM PORTABLE HEATERS, RADIATORS, OR OTHER HEAT GENERATING EQUIPMENT. AVOID WEDGING THE CAMERA IN ROCKROOTS, SUBMERGED TREES, OR UNDERWATER DEBRIS. DO NOT STORE UNIT IN DAMP PLACES. DO NOT ATTEMPT TO DISASSEMBLE THE WATERPROOF CASING OF THE CAMERA OR MONITOR. THIS VOIDS THE WARRANTY